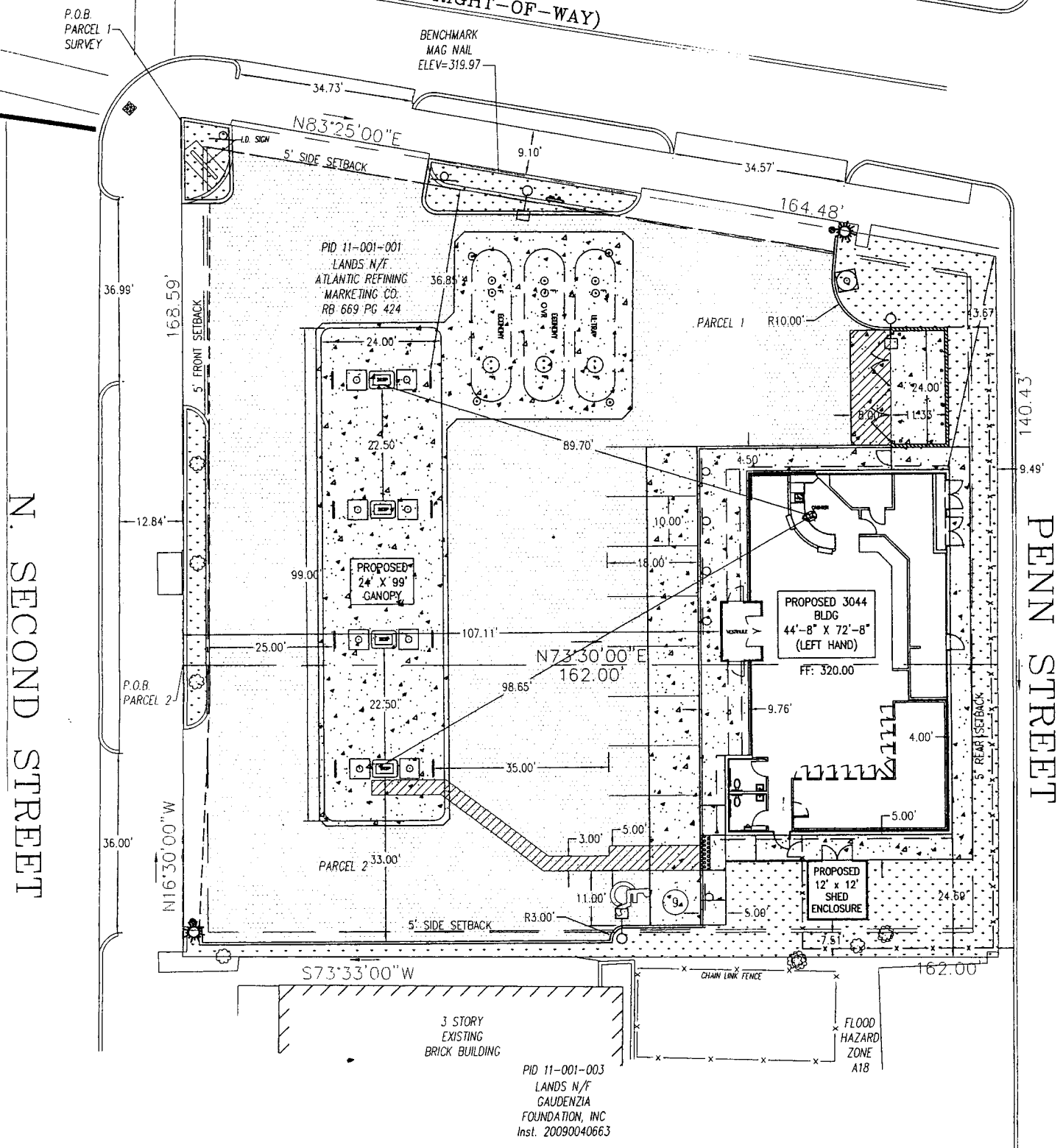


# MACLAY STREET (60' PUBLIC RIGHT-OF-WAY)



ORIGINAL LAYOUT- EXHIBIT 1

**NEGATIVES**

- SIMILAR TO EXISTING LAYOUT (ONLY PERCEIVED AS A  
NEGATIVE BY CITY, NOT SUNOCO)

**POSITIVES**

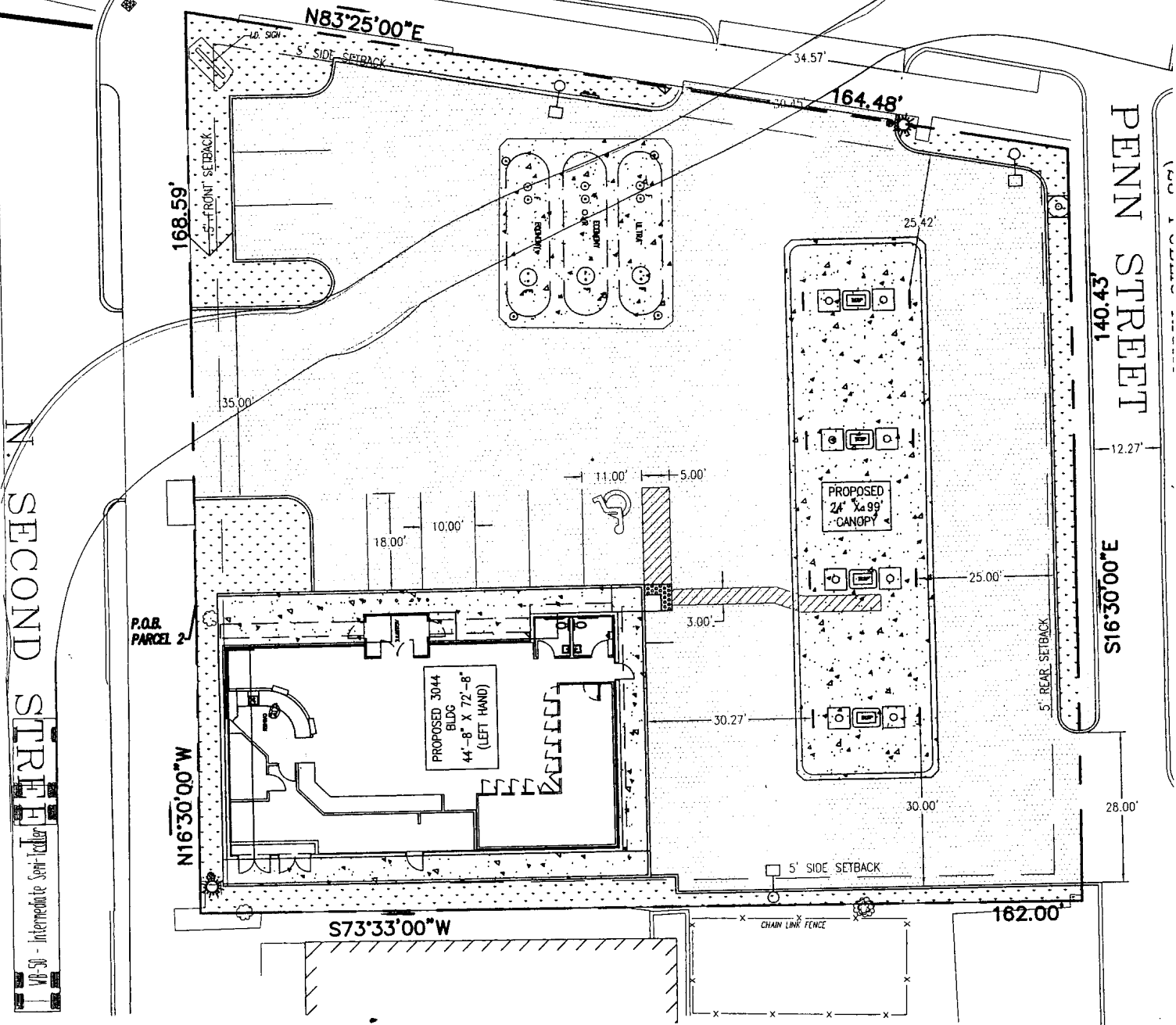
- SITE MEETS ALL ZONING CRITERIA
- ALLOWS SAFE TRAFFIC FLOWS INTO AND OUT OF SITE.
- ELIMINATES PENN STREET ACCESS. LIMITS ONE ACCESS FROM MACLAY  
STREET TO ENTRANCE ONLY, REDUCING IMPACT.
- PROVIDES ADDITIONAL LANDSCAPING FROM EXISTING, AND FENCING ALONG  
PENN STREET TO REDUCE SITE IMPACT.
- IMPACT TO GOVERNOR'S MANSION LESS THAN EXISTING; LIGHTING IS  
BETTER, LESS GLARE, AND FURTHER FROM STREET.


REV. NO.	DATE	REVISIONS	DRAWN BY	CHK'D BY	APP'D
<b>SUNOCO, INC.</b> Retail Engineering Exton, PA					
LOCATION: 2053 N. 2ND STREET HARRISBURG, PA DAUPHIN COUNTY			PROJECT NO. 98752 00		
<b>ORIGINAL LAYOUT-EXHIBIT 1</b>					
APPROVED RPS		FACILITY NO.		DRAWING NO.	
CHECKED	TED	0363-2502		<b>EX-1</b>	
DRAWN	SLW			REV. NO.	
DATE	1/4/2011			0	

ROBERT P. SWITALA  
 PENNSYLVANIA PROFESSIONAL ENGINEER  
 LICENSE #: 073689

SCALE 1" = 20'-0"

MACLAY STREET  
(60' PUBLIC RIGHT-OF-WAY)



ALTERNATE LAYOUT 1 - EXHIBIT 2

**NEGATIVES**

- CASHIER CAN NOT SEE DISPENSERS WHICH WOULD REQUIRE CAMERAS.
- NO ROOM FOR DUMPSTER/SHED WITHOUT REDUCING PARKING WHICH WOULD REQUIRE VARIANCE.
- TRUCK MANEUVERING MAY REQUIRE BACKING UP.
- REDUCED LANDSCAPED AREAS.
- REQUIRES ENTRANCE/TRAFFIC ON PENN STREET WHICH HAS MINIMAL TRAVEL WIDTH.
- BUS STOP TO BE RELOCATED.
- VEHICULAR CIRCULATION DIFFICULT.
- POOR VISIBILITY FROM SECOND STREET UNTIL PAST BUILDING.
- PARKING IN FRONT OF STORE HAS POTENTIAL TO BACK INTO TRUCK TRAFFIC, NOT PREFERABLE.
- UNSAFE PATRON ACCESS FROM NORTHWEST PARKING SPACES.

**POSITIVES**

- BUILDING SET ALONG STREET.
- REDUCES VISUAL IMPACT FROM GOV. MANSION.
- REDUCTION TO ONE ACCESS POINT ON BOTH N. SECOND STREET AND AND MACLAY STREET.


REV. NO.	DATE	REVISIONS	DRAWN BY	CHK'D BY	APP'D
<b>SUNOCO, INC.</b> Retail Engineering Exton, PA					
LOCATION:			2053 N. 2ND STREET HARRISBURG, PA DAUPHIN COUNTY		PROJECT I.D. 98752 00
<b>ALTERNATE 1-EXHIBIT 2</b>					
APPROVED RPS			FACILITY NO.		SCALE 1" = 20'-0"
CHECKED TED			DRAWING NO.		REV. NO.
DRAWN SLW			0363-2502		<b>EX-2</b>
DATE 1/4/2011					0

ROBERT P. SWITALA  
 PENNSYLVANIA PROFESSIONAL ENGINEER  
 LICENSE #: 073689





# MACLAY STREET (60' PUBLIC RIGHT-OF-WAY)

P.O.B.  
PARCEL 1  
SURVEY

BENCHMARK  
MAG NAIL  
ELEV=319.97

34.02'

N83°25'00"E

PID. 11-001-001  
LANDS N/F  
ATLANTIC REFINING  
MARKETING CO.  
RB 669 PG 424

PARCEL 1

164.48'

168.59'

1.83'

140.43'

N. SECOND STREET

PENN STREET

P.O.B.  
PARCEL 2

N16°30'00"W

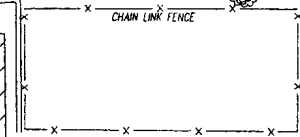
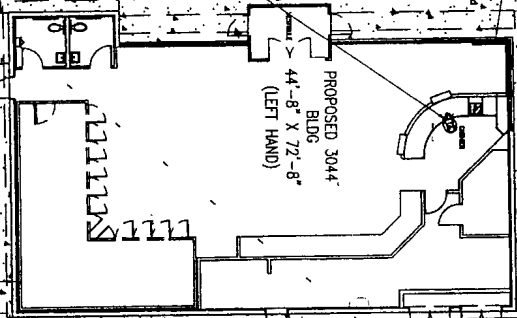
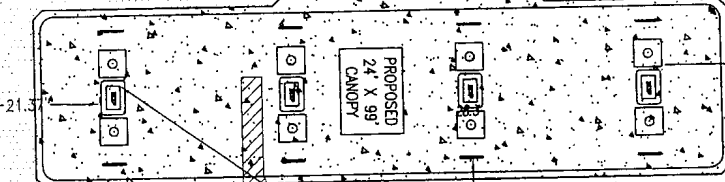
S73°33'00"W

3 STORY  
EXISTING  
BRICK BUILDING

PID 11-001-003  
LANDS N/F  
GAUDENZIA  
FOUNDATION, INC  
Inst. 20090040663

FLOOD  
HAZARD  
ZONE  
A18

55.76'



6.64'

162.00'

ALTERNATE LAYOUT 3- EXHIBIT 4

**NEGATIVES**

- BUILDING CLOSE TO EXISTING ADJOINING BUILDING.
- PARKING NOT IN FRONT OF BUILDING. NOT A PREFERRED SUNOCO OPTION.
- DUMPSTER IS LOCATED AWAY FROM BUILDING.
- BUILDING ELEVATION WILL BE LESS THAN 320.00 TO ENSURE PROPER GRADING.
- TIGHT TRAVEL LANE ALONG N SECOND STREET BETWEEN DISPENSER ISLAND AND CURB.
- SOME VEHICULAR BLOCKING POSSIBLE WHEN TRUCK IS UNLOADING.
- NEW ENTRY LOCATION ON N SECOND STREET.

**POSITIVES**

- ACCESSES LIMITED TO 4, WITH ONE ACCESS FROM N SECOND STREET AND MACLAY STREET BEING MODIFIED TO ENTRANCE ONLY..
- ADDITIONAL LANDSCAPING ON SITE, WITH LARGER FRONT LANDSCAPING AREAS.
- PROVIDES FAR LESS IMPACT TO GOVERNOR'S MANSION WITHOUT BLOCKING CANOPY AREAS FROM VIEW OF CANOPY.
- ALLOWS TANKS TO REMAIN WHERE THEY ARE, AND ALLOWS APPROPRIATE TRUCK ACCESS TO TANKS.
- KEEPS TRAFFIC OFF PENN STREET.
- ON-SITE VEHICULAR TRAFFIC IS NOT FORCED, ALLOWING TRAFFIC IN AND OUT OF SITE.
- BUILDING MAINTENANCE AND UTILITY DOORS APPROPRIATELY HIDDEN.
- LINE OF SIGHT TO DISPENSERS NOT COMPROMISED.


REV. NO.	DATE	REVISIONS	DRAWN BY	CHK'D BY	APP'D.
<b>SUNOCO, INC.</b> Retail Engineering Exton, PA					
LOCATION: 2053 N. 2ND STREET HARRISBURG, PA DAUPHIN COUNTY			PROJECT NO. 98752.00		
<b>ALTERNATIVE 3 - EXHIBIT 4</b>					
APPROVED RPS		FACILITY NO.	DRAWING NO.	SCALE: 1" = 20'-0"	
CHECKED TED		0363-2502	<b>EX-4</b>	REV. NO.	
DRAWN SLW				0	
DATE 1/4/2011					

ROBERT P. SWITALA  
 PENNSYLVANIA PROFESSIONAL ENGINEER  
 LICENSE #: 073689